

7/476, Madaparambil Arcade
Oushadi Junction, Perumbavoor
Ernakulam, Kerala 683542, India.



CORPORATE PROFILE

PRAHARI ISR PLATFORM

Catalogue '22



DRONE ISR AUTOMATIONS

WWW.SCANIGLE.COM



Provide cutting edge Drone based ISR Products and Services that opens up new markets, new opportunities and new revenues for a vast number of Private and Public entities.



“Our MISSION is driven by the passion for our VISION”



Drones are poised to carry the multi-spectral data collection field to dizzying new heights of possibility and performance. We at Scanigle want to be ready, able and timely with our DAS (Drone-As-Service) and IAS (ISR-As-Service) offerings at the leading edge of this exciting revolution.

“Our VISION is grounded in and guided by our CORE VALUES”

We place the highest value in the four pillars of our business: the strength of our technology; the ability of our team to execute; the applicability of our solution to our customers need; and the financial rewards to our customers, our inves-





Comprehensive, Transportable, Tethered ISR Platform



Patent Pending Field Deployment Container



Patent Pending TDP Fabricated UAV



Integrated, Patent Pending Platform Controller

Scanigle's

PRAHARI PT-100 ISR PLATFORM

It is an end-to-end aerial ISR solution that is fully mobile, has unlimited operational endurance, is field deployable in minutes, highly automated and able to operate with simple field supervision to provide next generation contextual intelligence based on situational demands.

Prahari Platform has integrated cutting edge technologies in varied fields such as Industrial Automation, Tethered Flights, Flight Control Laws, Integrated IoT and Multi-Spectral Sensors, Emerging Communication Protocols such as LoRa and others to deliver a boutique of Intelligence possibilities to choose from. To this harvested information, Prahari through its ISR delivery portal can apply Big Data Ingestion, AI Pattern Recognition and Secure Payload Delivery Chain to remotely bring you comprehensive and actionable streaming intelligence to meet your ISR needs of today and into the future.



**FIXED & MOBILE
OPERATIONS**




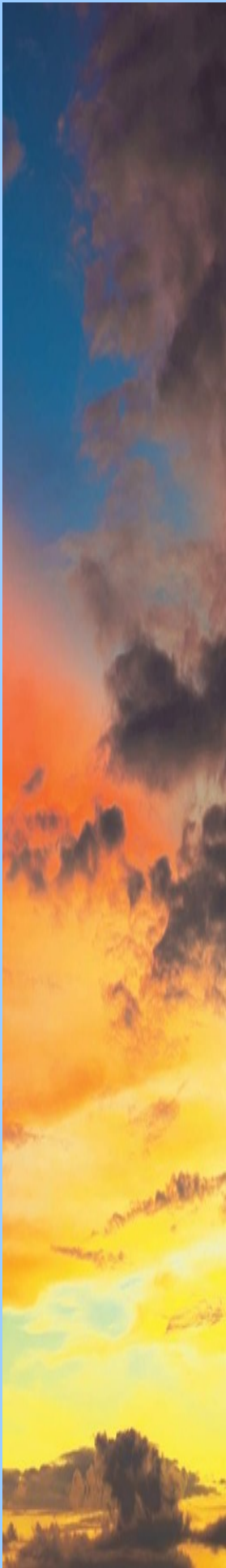
**UNLIMITED
ENDURANCE**



**AUTONOMOUS
FLY AND SENSE**



**SECURE CONTENT
DELIVERY**



PLATFORM STRENGTHS

Durable

Prahari Patent Pending Drone frame is a Commercial, Professional Grade surround frame that is custom built for sturdy ruggedness and hazardous condition deployment and is designed to work day in and day out.

Flexible

Multiple Patent Pending modules of the Prahari ISR Platform is built ground up for flexibility. It is designed to operate in dramatically different settings requiring a broad variety of sensors, controllers and communication devices that are seamlessly integrated.

Precise

To provide survey-grade accuracy and pinpoint location positioning of images or measurements, Prahari is equipped with redundant GPS, LIDAR, RTK, Optical, UV and, Thermal Imaging and other Sensors.

Reliable

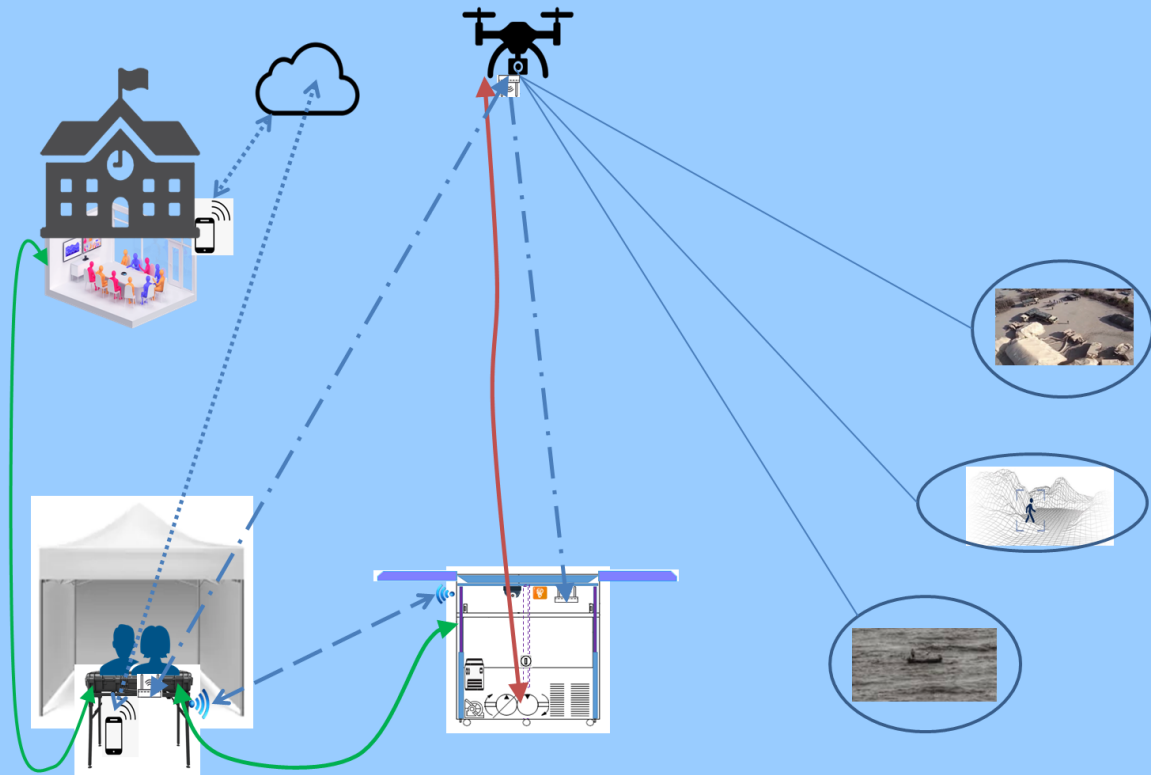
Prahari UAV may be operating over people, or in a hazard zone, and thus they must operate with a much higher level of reliability than their consumer counterparts. Prahari ISR is designed to be fully self aware and is tethered at all times.

Supportable

Prahari ISR Platform is a very reliable, simple to operate but complex system. It is designed to provide a reasonable lifetime of flights. The Prahari ISR stack is geared to have a high level of maintainability and upgradeability.

Summary

Prahari ISR Platform has set its bar high and expects to be compared with the best in its class and confident of staking its claim to the top slot.



ISR Cloud Supply Chain

The PT-100 JSR Drone Platform based multi-spectral data collection services from ScanigleTechnologies opens up new possibilities in Inspections, surveys, event monitoring, calamity tracking and many other forms of terrain-related intelligence and data collection efforts.

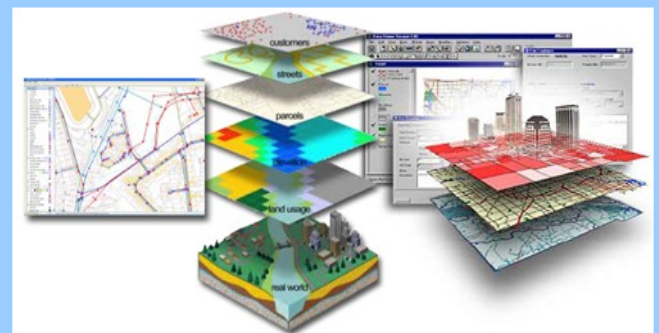


Multi Spectral Mapping

Those efforts have long suffered from inadequate perspective, automation, scalability, repeatability, delivery and timeliness. Those inadequacies and other limitations not only render these efforts expensive, lacking in accuracy, labor intensive and time consuming; they also constrain what's even feasible in surveillance and data collection.

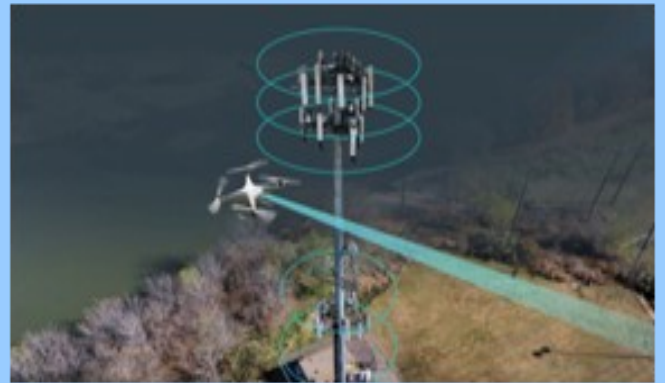
AI-BIGDATA Analytics

Altogether, drones are poised to carry the multi-spectral data collection effort to dizzying new heights of possibility and performance. We at Scanigle Technologies are ready, able and timely with our DAS (Drone-As-Service) and IAS (ISR-As-Service) offering using our Prahari PT-100 ISR Drone Platform at the leading edge of this exciting revolution.



Domain Expertise

Monitoring



Inspection



Construction

News



Defense



Tracking

Emergency



Disaster

SCANIGLE TECHNOLOGIES

SHARPENING INSIGHT



7/476, Madaparambil Arcade
Oushadi Junction, Perumbavoor
Ernakulam, Kerala 683542, India.



info@scanigle.com
WWW.SCANIGLE.COM



+91 704 284 7996

Get in touch
Grow with us